



Department of Building Safety

101 4th St E, Hastings, MN 55033

Phone: 651-480-2342

Email: Building@Hastingsmn.gov

www.hastingsmn.gov

Smoke & Carbon Monoxide Alarms

- **Smoke alarms** must be installed in **all** areas listed below:
 - Inside each sleeping room
 - Outside sleeping rooms
 - On each habitable level
- **Carbon monoxide alarms** must be installed outside and within **10 feet of all sleeping rooms** in homes with fuel fired appliances or attached garages.
- Smoke & Carbon Monoxide alarms are required to be hardwired and interconnected.
 - Exceptions: existing alarms that are battery operated, and construction does not allow for installation hardwired/interconnected alarms.
- The use of combination smoke/carbon monoxide alarms are permitted.
- Smoke & Carbon monoxide alarms are required to be checked at final inspection for any permitted alterations, repairs, or additions involving the interior of the home.
- **All alarms must be installed and operational throughout the entire home at final inspection.**

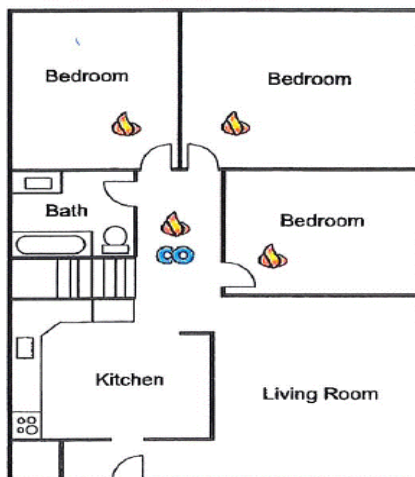


Figure 1

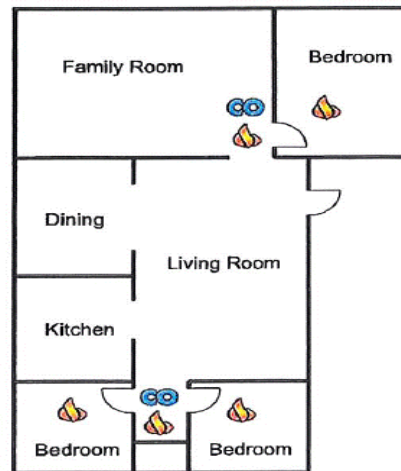


Figure 2



Figure 3

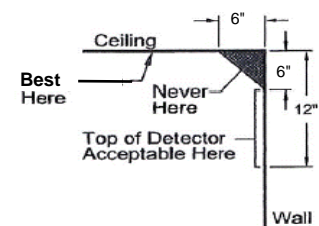


Figure 4



REQUIRED SMOKE ALARM LOCATION



REQUIRED CARBON MONOXIDE ALARM LOCATION