

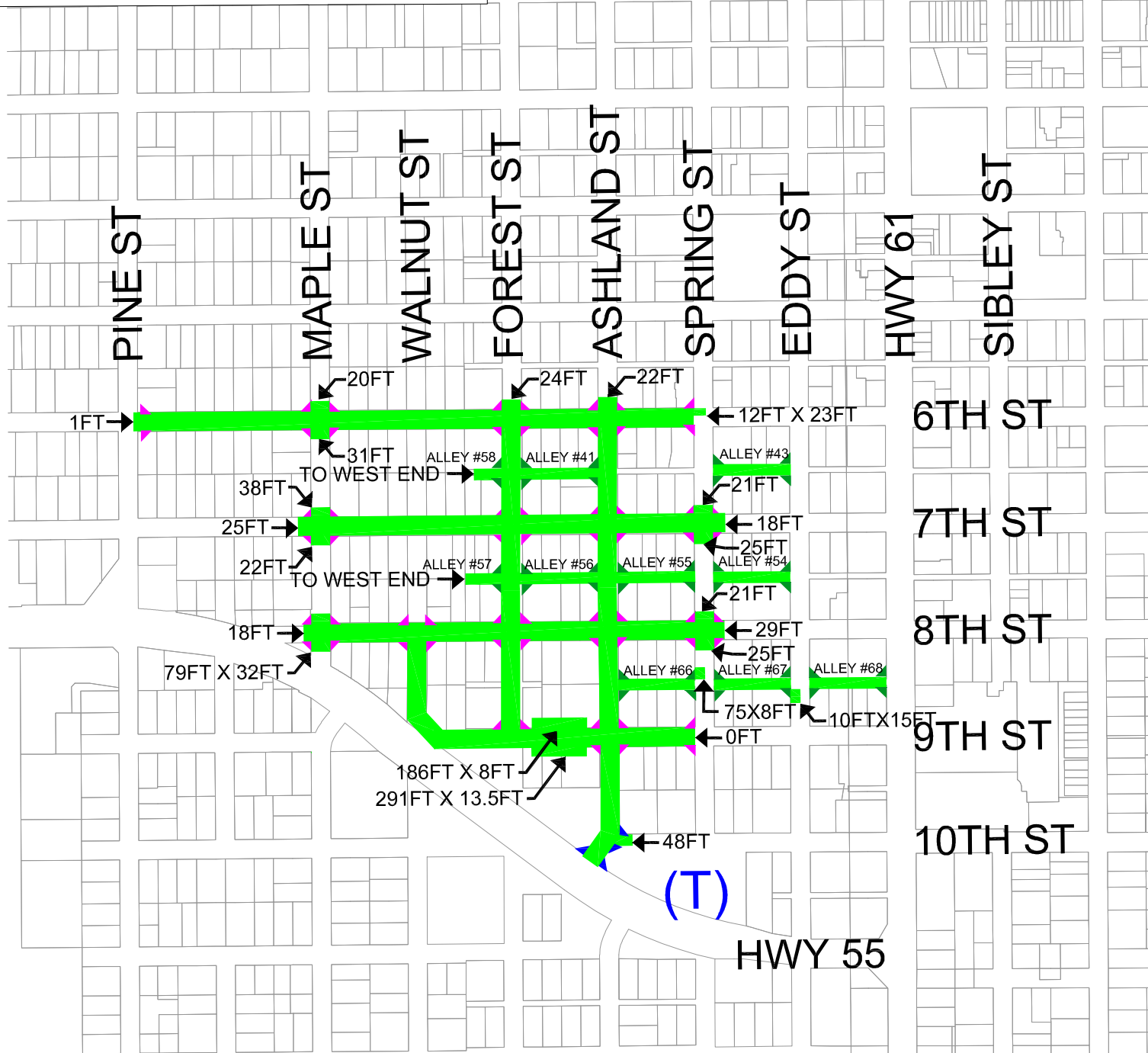
█ SEAL COAT
█ SEAL COAT & FOG SEAL

NOTE:
IF ADJACENT STREET HAS BEEN
PREVIOUSLY SEALCOATED, MATCH
NEW SEALCOAT TO EXISTING SEALCOAT

- 15' RADIUS = 48.75SF
- RADIUS LARGER THAN 15'
- NO RADIUS TO BE CALCULATED

(F) GARBAGE DAY

2017-2018 RECONSTRUCTION AREA



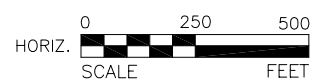
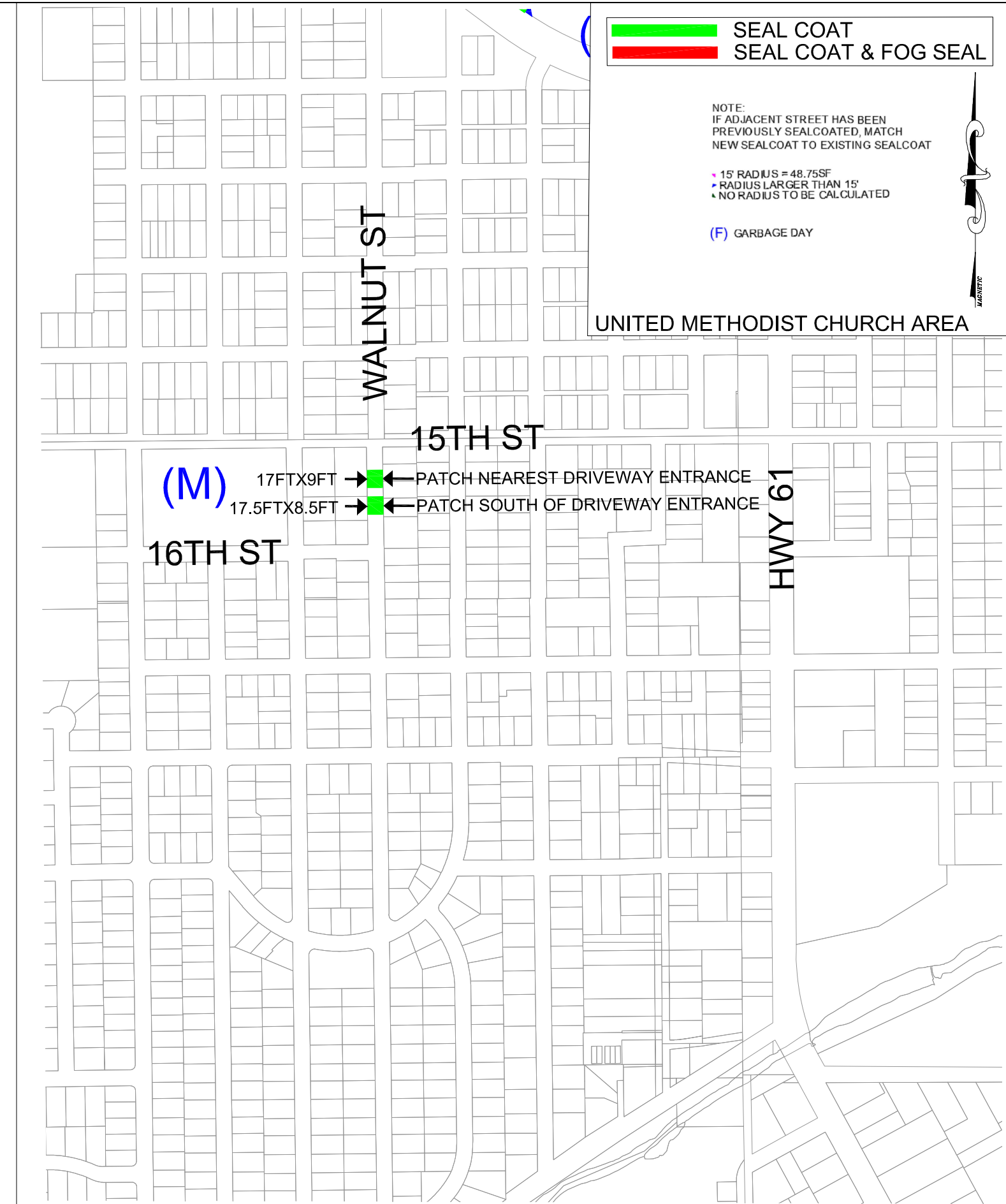
█ SEAL COAT
█ SEAL COAT & FOG SEAL

NOTE:
IF ADJACENT STREET HAS BEEN
PREVIOUSLY SEALCOATED, MATCH
NEW SEALCOAT TO EXISTING SEALCOAT

- 15' RADIUS = 48.75SF
- RADIUS LARGER THAN 15'
- NO RADIUS TO BE CALCULATED

(F) GARBAGE DAY

UNITED METHODIST CHURCH AREA



REV.	BY	DATE

I HEREBY CERTIFY THAT THIS PLAN WAS PREPARED BY ME OR UNDER MY DIRECT SUPERVISION AND THAT I AM A DULY LICENSED PROFESSIONAL ENGINEER UNDER THE LAWS OF THE STATE OF MINNESOTA.

John Caven
JOHN CAVEN, P.E.
LIC. NO. 47540 DATE 2/25/19

DESIGNED: JRC
DRAWN: JRC
CHECKED: JRC



City of Hastings
101 4th Street East
Hastings, MN 55033

2019 SEAL COAT PROGRAM

SHEET 1 OF 2

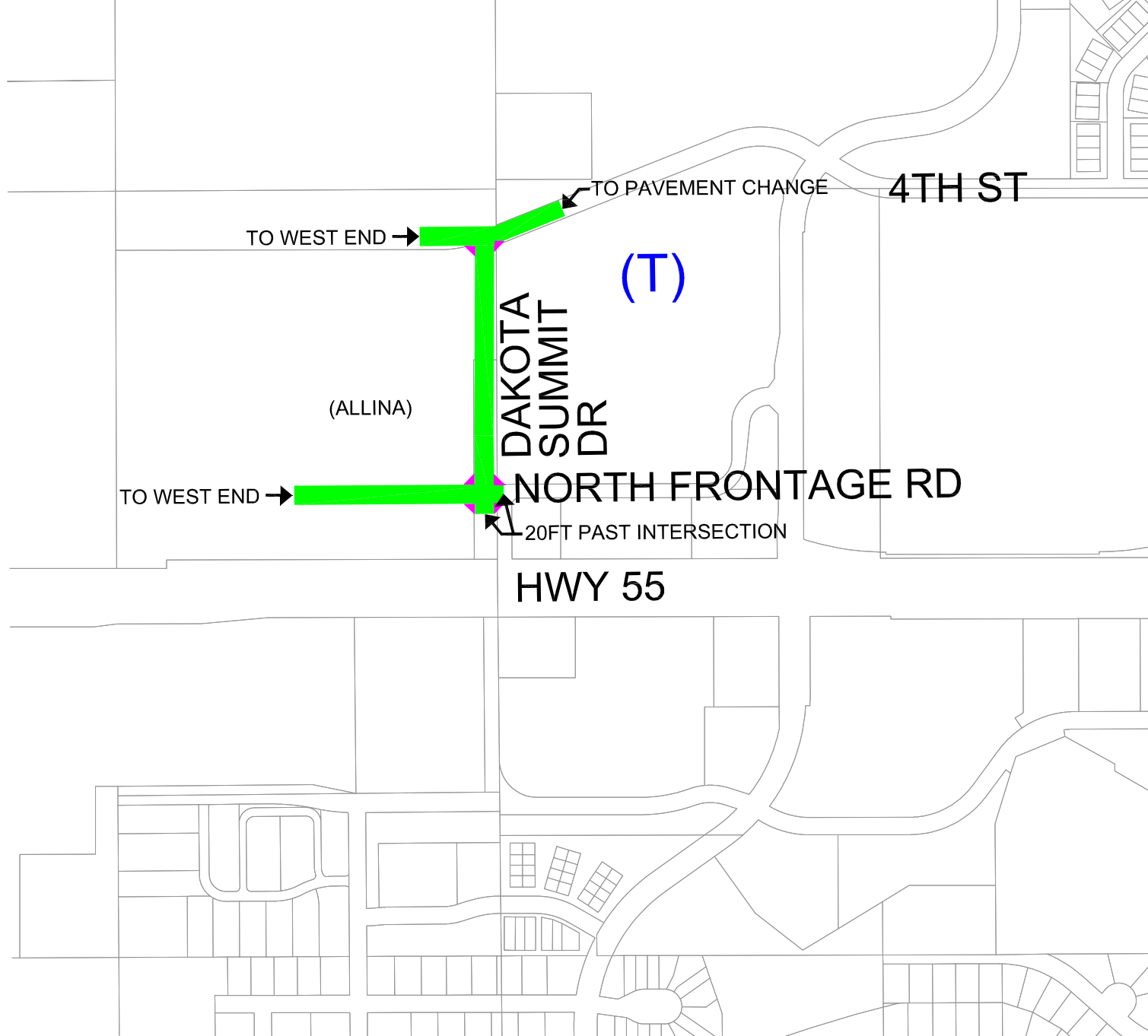
 SEAL COAT
 SEAL COAT & FOG SEAL

NOTE:
IF ADJACENT STREET HAS BEEN
PREVIOUSLY SEALCOATED, MATCH
NEW SEALCOAT TO EXISTING SEALCOAT

- 15' RADIUS = 48.75SF
- RADIUS LARGER THAN 15'
- NO RADIUS TO BE CALCULATED

(F) GARBAGE DAY

ALLINA AREA



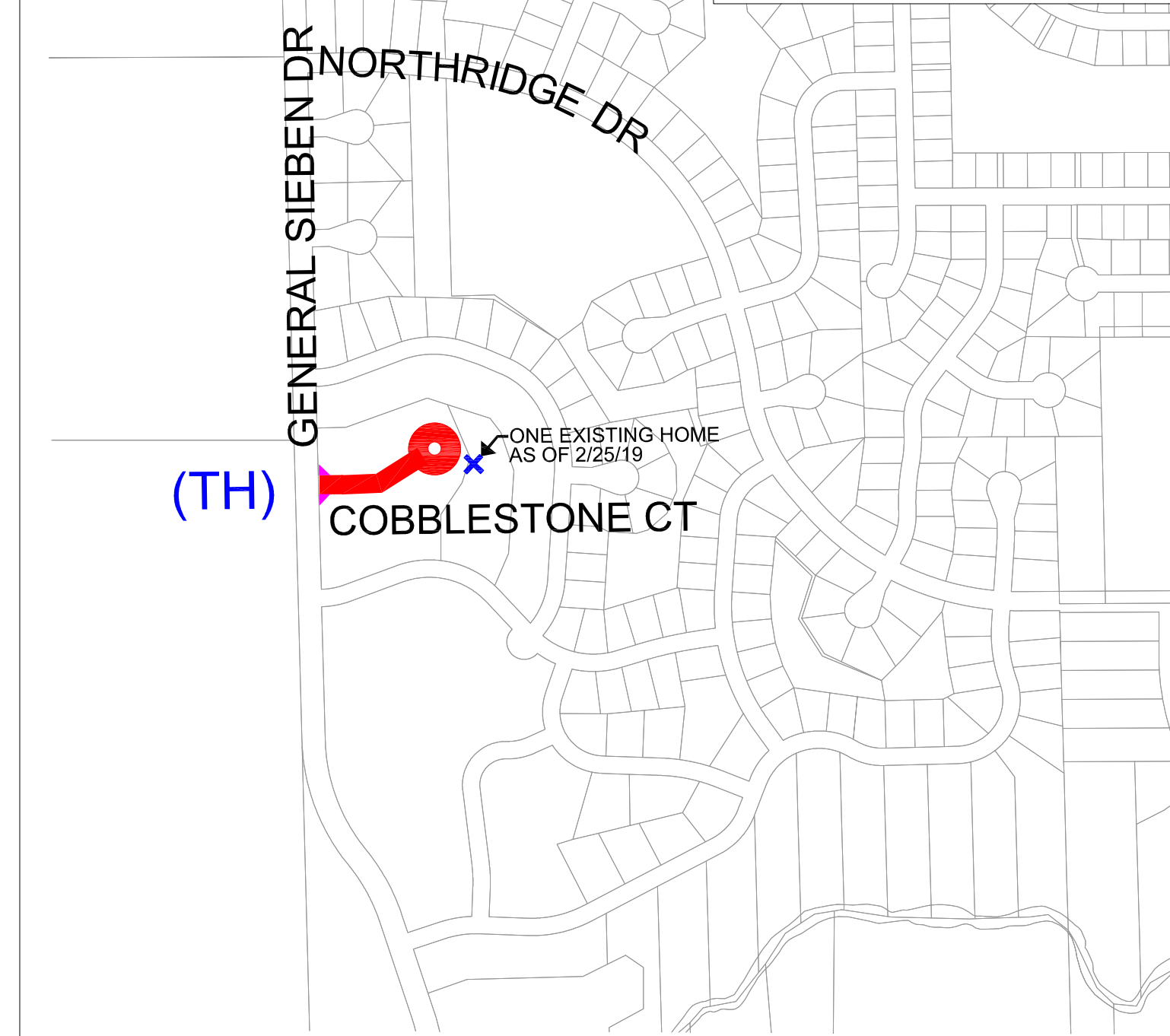
 SEAL COAT
 SEAL COAT & FOG SEAL

NOTE:
IF ADJACENT STREET HAS BEEN
PREVIOUSLY SEALCOATED, MATCH
NEW SEALCOAT TO EXISTING SEALCOAT

- 15' RADIUS = 48.75SF
- RADIUS LARGER THAN 15'
- NO RADIUS TO BE CALCULATED

(F) GARBAGE DAY

COBBLESTONE CT AREA



REV.	BY	DATE

I HEREBY CERTIFY THAT THIS PLAN WAS PREPARED BY ME OR UNDER MY DIRECT SUPERVISION AND THAT I AM A DULY LICENSED PROFESSIONAL ENGINEER UNDER THE LAWS OF THE STATE OF MINNESOTA.
John Caven
 JOHN CAVEN, P.E.
 LIC. NO. 47540 DATE 2/25/19

DESIGNED	JRC
DRAWN	JRC
CHECKED	JRC
DATE	JRC



City of Hastings
 101 4th Street East
 Hastings, MN 55033

2019 SEAL COAT PROGRAM

SHEET
 2
 OF
 2